

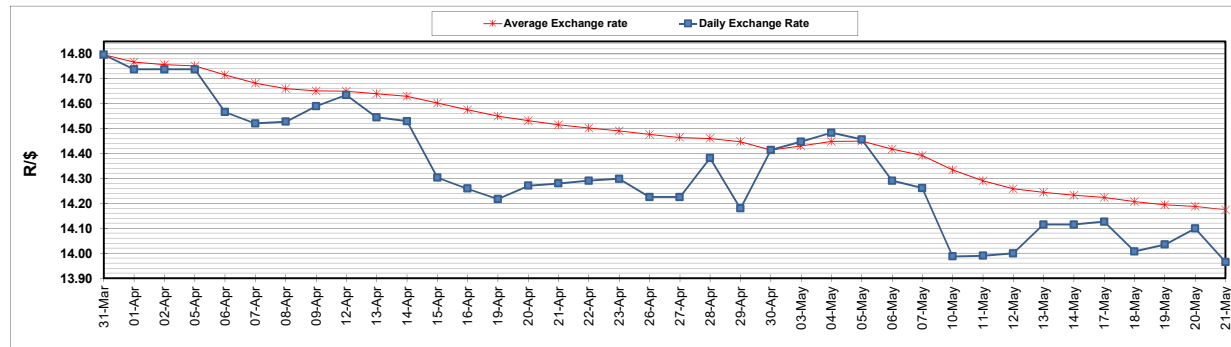
	PETROL 95 ULP	PETROL 93 ULP & LRP	DIESEL 0.05%	DIESEL 0.005%	ILL. PAR.
GAUTENG PUMP PRICE (SA c/l) AS FROM 05/05/2021	1,723.000	1,701.000	-	-	-
WHOLESALE PRICE (SA c/l) AS FROM 05/05/2021	-	-	1,446.620	1,450.020	857.488
SINGLE NATIONAL MAXIMUM RETAIL PRICE	-	-	-	-	1,076.000
BASIC FUEL PRICE - 21/05/2021 (SA c/l)	685.390	675.634	660.776	665.843	641.398
PRESS RELEASE CONTRIBUTION TO BFP 05/05/2021 - 21/05/2021 (SA c/l)	727.170	715.170	659.630	663.030	644.128
UNIT OVER/(UNDER) RECOVERY - 21/05/2021 (SA c/l)	41.780	39.536	(1.146)	(2.813)	2.730
AVERAGE BASIC FUEL PRICE 30/04/2021 - 21/05/2021	720.779	710.051	684.746	688.901	670.962
AVERAGE UNIT OVER/(UNDER) RECOVERY 30/04/2021 - 21/05/2021	8.079	6.807	(19.304)	(20.246)	(22.521)

ANALYSIS MOVEMENT OF AVERAGE OVER/(UNDER) RECOVERY

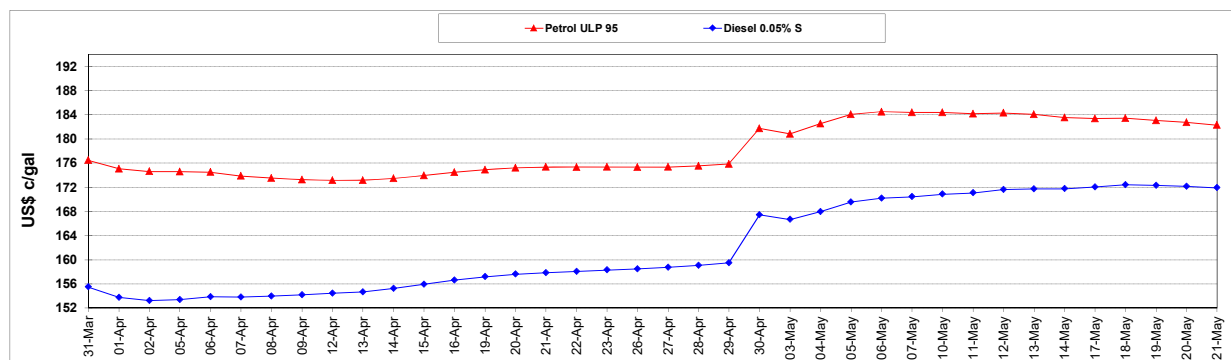
	PETROL 95	PETROL 93	DIESEL 0.05%	DIESEL 0.005%	ILL. PAR.
- MOVEMENT IN INTERNATIONAL PRODUCT PRICES	(5.823)	(6.888)	(32.510)	(33.534)	(35.463)
- MOVEMENT IN EXCHANGE RATE	13.902	13.695	13.207	13.288	12.942
AVERAGE UNIT OVER/(UNDER) RECOVERY 30/04/2021 - 21/05/2021	8.079	6.807	(19.304)	(20.246)	(22.521)

R/\$ EXCHANGE RATE - (R/\$13.9650- 21/05/2021)

EXCHANGE RATE USED IN BASIC FUEL PRICE



INTERNATIONAL PRODUCT PRICES OF BASKET USED IN BASIC FUEL PRICE



BASIC FUEL PRICE IN SA CENTS PER LITRE

